

# VANCOUVER HOUSE

# ARCHITECT SERIES

# 2201



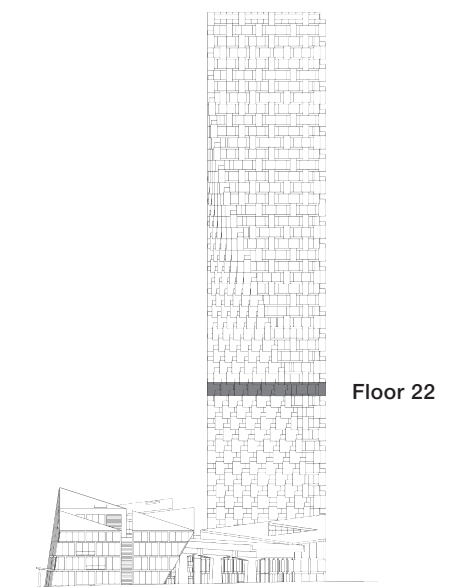
**TWO BEDROOM**

**TOTAL LIVING 786 SQ FT**

Indoor Living 724 sq ft

Outdoor Living 62 sq ft

This unique home features a gallery foyer ideal for displaying an art collection. The open-concept living and dining area separates the two bedrooms, allowing for greater privacy, and enjoys access to an east-facing terrace with views of False Creek and David Lam Park.



westbank

**BIG**

THERE ARE NO REPRESENTATIONS OR WARRANTIES HEREIN, MADE BY THE DEVELOPER, ITS AGENTS OR EMPLOYEES, OR ANY OTHER PERSON ON BEHALF OF THE DEVELOPER, OTHER THAN THOSE CONTAINED IN A CONTRACT OF PURCHASE AND SALE BETWEEN A PURCHASER AND THE DEVELOPER AND IN THE DISCLOSURE STATEMENT FOR THE DEVELOPMENT TO THE EXTENT MANDATED BY LAW. IN PARTICULAR, THE PURCHASER ACKNOWLEDGES AND AGREES THAT THE MATERIALS, SPECIFICATIONS, DETAILS, DIMENSIONS, LAYOUT AND FLOORPLANS SET OUT HEREIN OR OTHERWISE VIEWED BY THE PURCHASER ARE APPROXIMATE AND SUBJECT TO CHANGE WITHOUT NOTICE.

ARCHITECT  
SERIES

2201

TWO BEDROOM

VANCOUVER  
HOUSE