

VANCOUVER HOUSE

ESTATE 4702



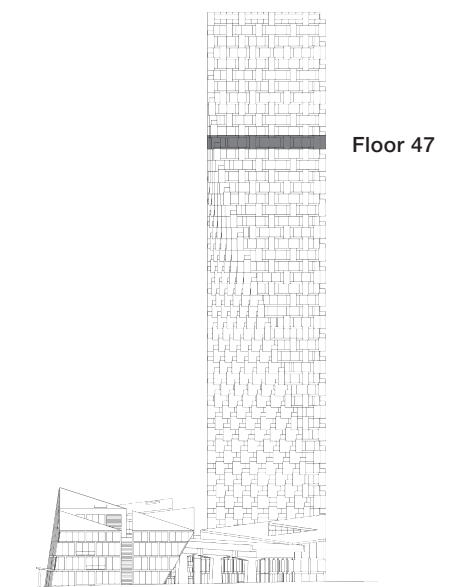
THREE BEDROOM & FAMILY ROOM

TOTAL LIVING 2323 SQ FT

Indoor Living 2071 sq ft

Outdoor Living 252 sq ft

- Unobstructed views of English Bay, Stanley Park, and the Lions Gate Bridge
- Boffi chef's kitchen featuring Miele appliances and custom BIG-designed Corian island
- Master Bedroom with marble clad five-piece ensuite and dressing room
- Private sleeping wing with three spacious bedrooms



westbank

BIG

4702

ONE BEDROOM & FAMILY ROOM

This stunning Estate three-bedroom with family room home has over 65 linear feet of floor-to-ceiling glazing, optimizing expansive vistas of English Bay, Stanley Park, and the Lions Gate Bridge. Two generous terraces act as picture frames for the surrounding scenery, epitomizing the indoor-outdoor aesthetic. A captivating view beckons from the foyer and leads into a grand salon with open concept living and dining areas. The separated Boffi kitchen with Miele appliances and custom BIG-designed Corian island is the ideal chef's kitchen with an informal family room for entertaining. The bedrooms are cocooned in a private wing. The master bedroom boasts a large dressing room and a five-piece ensuite with a freestanding soaker tub and walk-in shower.

VANCOUVER
HOUSE