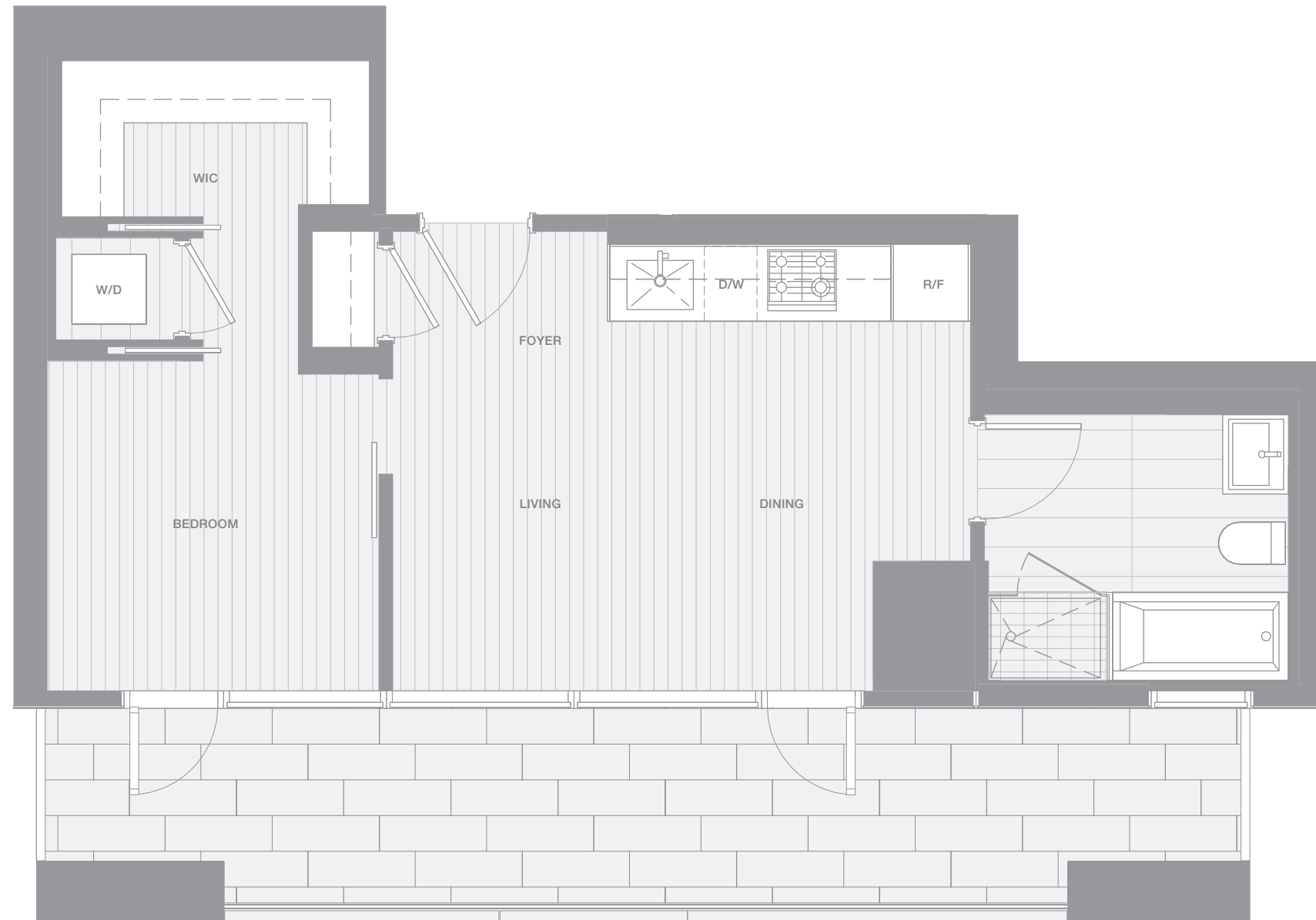


VANCOUVER HOUSE

ARCHITECT SERIES 903



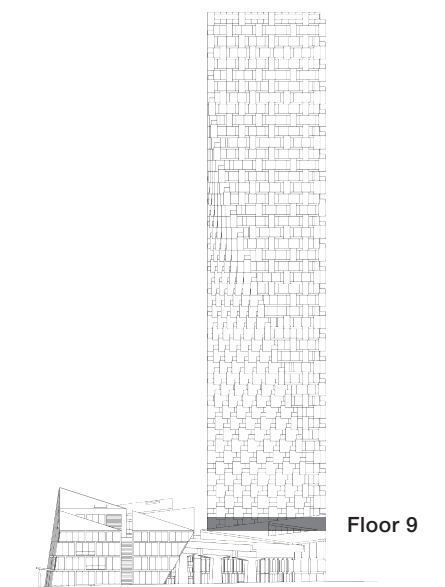
ONE BEDROOM

TOTAL LIVING 722 SQ FT

Indoor Living 522 sq ft

Outdoor Living 200 sq ft

This lovely, light-filled home features floor-to-ceiling glazing and an open-concept living, dining and kitchen area that lead to an expansive south-facing terrace. The bedroom offers a large walk-in closet and a luxurious four-piece bathroom complete with soaker tub and shower for a relaxing retreat.



westbank

BIG

THERE ARE NO REPRESENTATIONS OR WARRANTIES HEREIN, MADE BY THE DEVELOPER, ITS AGENTS OR EMPLOYEES, OR ANY OTHER PERSON ON BEHALF OF THE DEVELOPER, OTHER THAN THOSE CONTAINED IN A CONTRACT OF PURCHASE AND SALE BETWEEN A PURCHASER AND THE DEVELOPER AND IN THE DISCLOSURE STATEMENT FOR THE DEVELOPMENT TO THE EXTENT MANDATED BY LAW. IN PARTICULAR, THE PURCHASER ACKNOWLEDGES AND AGREES THAT THE MATERIALS, SPECIFICATIONS, DETAILS, DIMENSIONS, LAYOUT AND FLOORPLANS SET OUT HEREIN OR OTHERWISE VIEWED BY THE PURCHASER ARE APPROXIMATE AND SUBJECT TO CHANGE WITHOUT NOTICE.

20140718

ARCHITECT
SERIES

903
ONE BEDROOM

VANCOUVER
HOUSE