

VANCOUVER HOUSE

ARCHITECT SERIES

2101



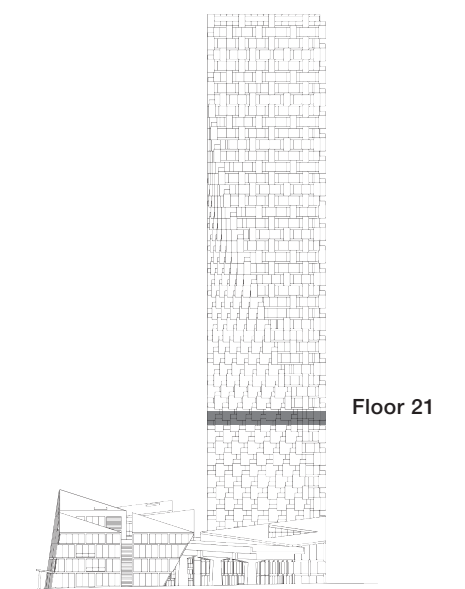
ONE BEDROOM & ATELIER

TOTAL LIVING 730 SQ FT

Indoor Living 600 sq ft

Outdoor Living 130 sq ft

This unique home offers the best of indoor and outdoor living, with east- and northeast-facing terraces augmenting a well-appointed interior. The gallery foyer is the ideal place to display an art collection, while the open-concept living and dining area opens to a generous balcony that looks out onto the natural beauty of False Creek and David Lam Park. A glassed-in atelier with balcony provides the perfect setting for a home office or library.



westbank

BIG

THERE ARE NO REPRESENTATIONS OR WARRANTIES HEREIN, MADE BY THE DEVELOPER, ITS AGENTS OR EMPLOYEES, OR ANY OTHER PERSON ON BEHALF OF THE DEVELOPER, OTHER THAN THOSE CONTAINED IN A CONTRACT OF PURCHASE AND SALE BETWEEN A PURCHASER AND THE DEVELOPER AND IN THE DISCLOSURE STATEMENT FOR THE DEVELOPMENT TO THE EXTENT MANDATED BY LAW. IN PARTICULAR, THE PURCHASER ACKNOWLEDGES AND AGREES THAT THE MATERIALS, SPECIFICATIONS, DETAILS, DIMENSIONS, LAYOUT AND FLOORPLANS SET OUT HEREIN OR OTHERWISE VIEWED BY THE PURCHASER ARE APPROXIMATE AND SUBJECT TO CHANGE WITHOUT NOTICE.

20140716