

VANCOUVER HOUSE

ARCHITECT SERIES

502

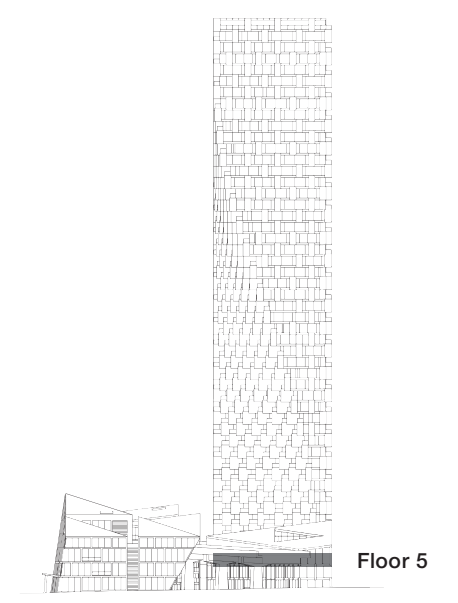
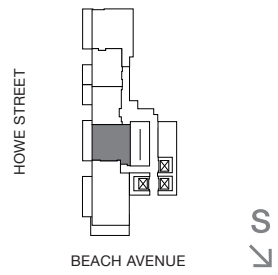
ONE BEDROOM

TOTAL LIVING 654 SQ FT

Indoor Living 528 sq ft

Outdoor Living 126 sq ft

Offering the best of indoor and outdoor living, this home is an ideal pied-à-terre. Park views from the west-facing terrace draw the eye. Floor-to-ceiling glazing and the open-concept living, dining, and kitchen area that opens onto the balcony provide a seamless transition between indoor and outdoor environments.



westbank

BIG

THERE ARE NO REPRESENTATIONS OR WARRANTIES HEREIN, MADE BY THE DEVELOPER, ITS AGENTS OR EMPLOYEES, OR ANY OTHER PERSON ON BEHALF OF THE DEVELOPER, OTHER THAN THOSE CONTAINED IN A CONTRACT OF PURCHASE AND SALE BETWEEN A PURCHASER AND THE DEVELOPER AND IN THE DISCLOSURE STATEMENT FOR THE DEVELOPMENT TO THE EXTENT MANDATED BY LAW. IN PARTICULAR, THE PURCHASER ACKNOWLEDGES AND AGREES THAT THE MATERIALS, SPECIFICATIONS, DETAILS, DIMENSIONS, LAYOUT AND FLOORPLANS SET OUT HEREIN OR OTHERWISE VIEWED BY THE PURCHASER ARE APPROXIMATE AND SUBJECT TO CHANGE WITHOUT NOTICE.

ARCHITECT
SERIES

502
ONE BEDROOM

VANCOUVER
HOUSE