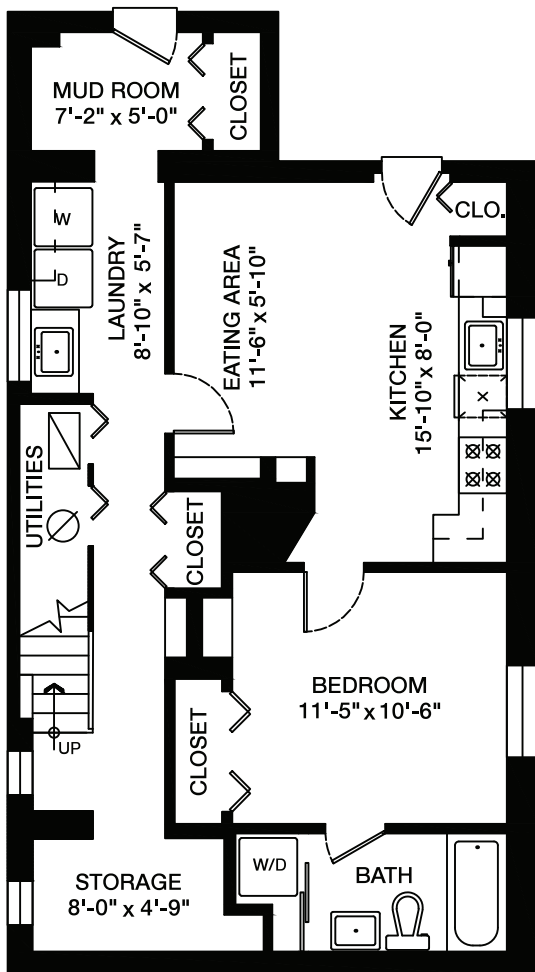
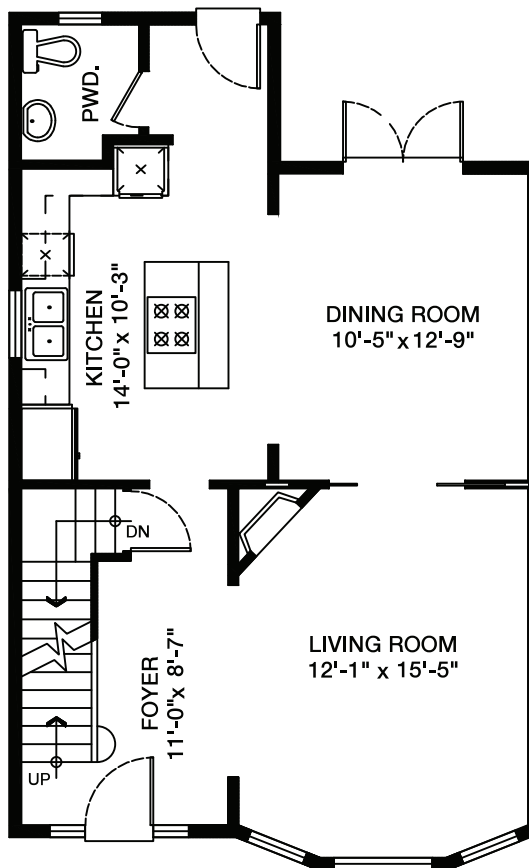


**2740 Pandora Street,
 Vancouver, B.C.**

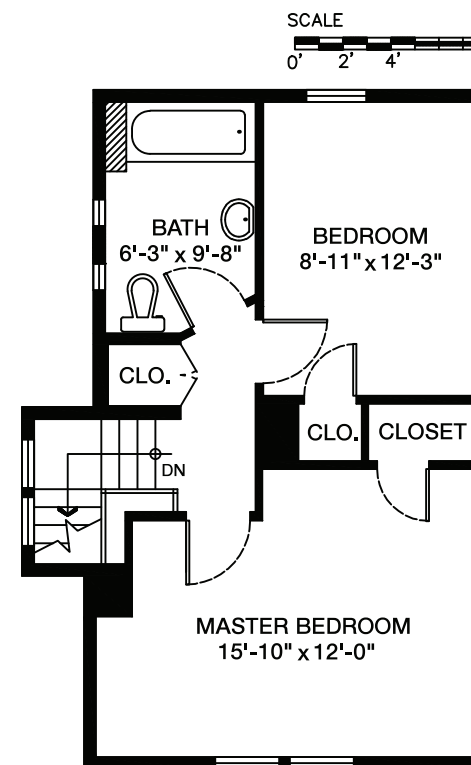
Main Floor: 704 sq.ft.
 Upper Floor: 488 sq.ft.
 Lower Floor: 820 sq.ft.
Total: 2,012 sq.ft.



LOWER FLOOR PLAN
 Floor Area: 820 sq.ft.
 Ceiling Height: 7'



MAIN FLOOR PLAN
 Floor Area: 704 sq.ft.
 Ceiling Height: 9 ft.



UPPER FLOOR PLAN
 Floor Area: 488 sq.ft.
 Ceiling Height: 8 ft.