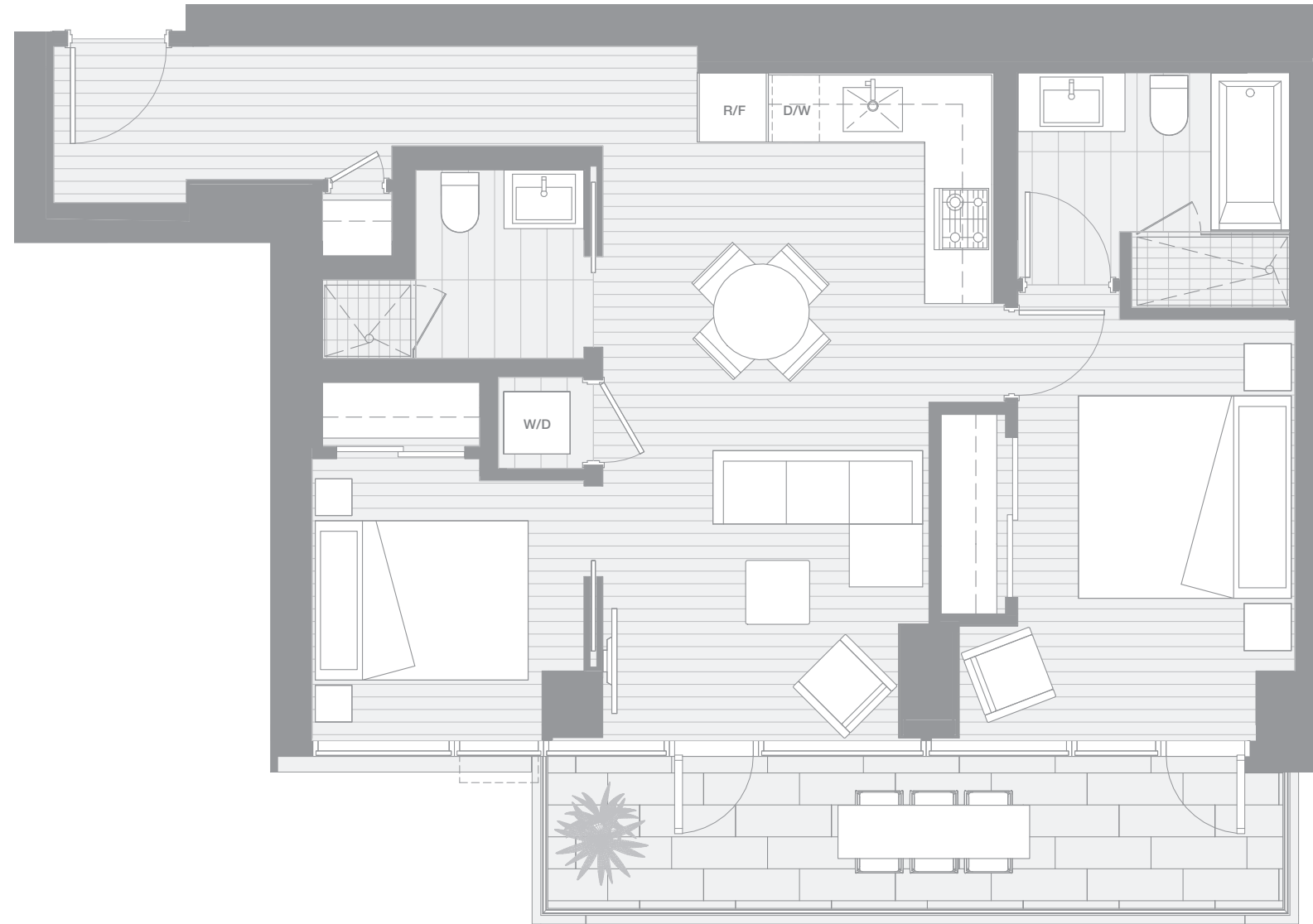


VANCOUVER HOUSE

ARCHITECT SERIES

2706



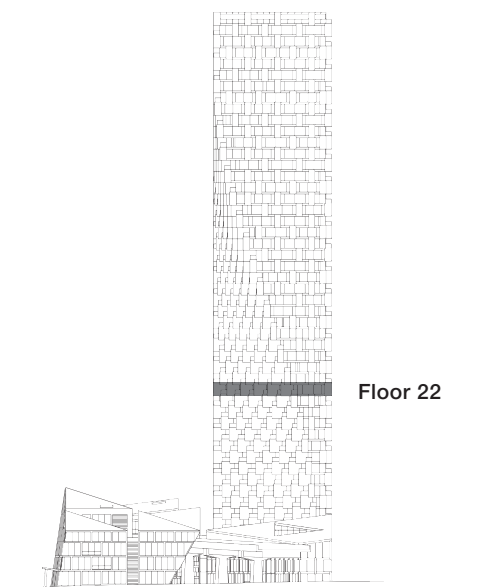
TWO BEDROOM

TOTAL LIVING 936 SQ FT

Indoor Living 810 sq ft

Outdoor Living 126 sq ft

This thoughtfully-designed urban home boasts a generous gallery foyer perfect for displaying an art collection. It also features gorgeous views of English Bay from the expansive west-facing terrace, accessible from the open living area and master bedroom.



westbank

BIG

THERE ARE NO REPRESENTATIONS OR WARRANTIES HEREIN, MADE BY THE DEVELOPER, ITS AGENTS OR EMPLOYEES, OR ANY OTHER PERSON ON BEHALF OF THE DEVELOPER, OTHER THAN THOSE CONTAINED IN A CONTRACT OF PURCHASE AND SALE BETWEEN A PURCHASER AND THE DEVELOPER AND IN THE DISCLOSURE STATEMENT FOR THE DEVELOPMENT TO THE EXTENT MANDATED BY LAW. IN PARTICULAR, THE PURCHASER ACKNOWLEDGES AND AGREES THAT THE MATERIALS, SPECIFICATIONS, DETAILS, DIMENSIONS, LAYOUT AND FLOORPLANS SET OUT HEREIN OR OTHERWISE VIEWED BY THE PURCHASER ARE APPROXIMATE AND SUBJECT TO CHANGE WITHOUT NOTICE.

ARCHITECT
SERIES

2706

TWO BEDROOM

VANCOUVER
HOUSE