

VANCOUVER HOUSE

ARCHITECT SERIES

3106



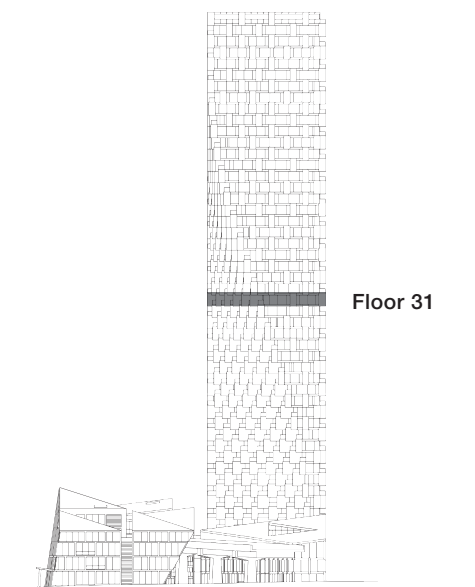
ONE BEDROOM

TOTAL LIVING 625 SQ FT

Indoor Living 499 sq ft

Outdoor Living 126 sq ft

This home features a generous open concept living, dining, and kitchen area with views of English Bay, perfect for entertaining. The large west-facing terrace also embraces the bedroom which boasts similar sea vistas.



westbank

BIG

ARCHITECT
SERIES

3106

ONE BEDROOM

VANCOUVER
HOUSE