

VANCOUVER HOUSE

ARCHITECT SERIES

4309



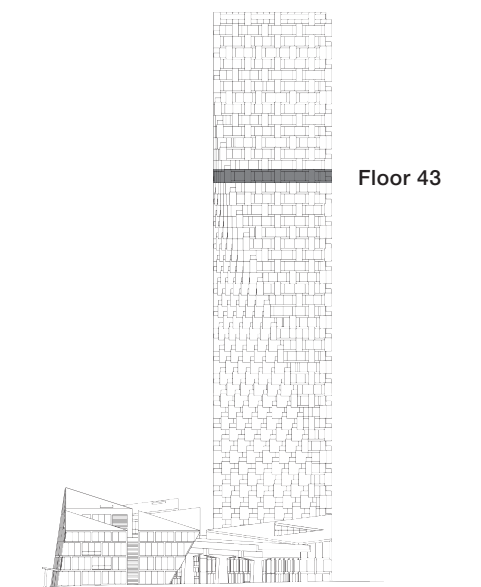
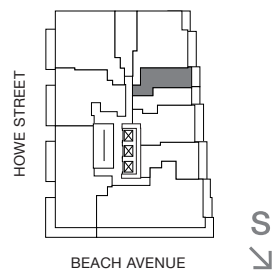
STUDIO

TOTAL LIVING 476 SQ FT

Indoor Living 413 sq ft

Outdoor Living 63 sq ft

This charming home features views of False Creek and the city. Morning light fills the living and sleeping area, which opens onto a generous copper-clad balcony. Space is amplified by a streamlined layout and a Murphy bed custom-designed by BIG.



westbank

BIG

THERE ARE NO REPRESENTATIONS OR WARRANTIES HEREIN, MADE BY THE DEVELOPER, ITS AGENTS OR EMPLOYEES, OR ANY OTHER PERSON ON BEHALF OF THE DEVELOPER, OTHER THAN THOSE CONTAINED IN A CONTRACT OF PURCHASE AND SALE BETWEEN A PURCHASER AND THE DEVELOPER AND IN THE DISCLOSURE STATEMENT FOR THE DEVELOPMENT TO THE EXTENT MANDATED BY LAW. IN PARTICULAR, THE PURCHASER ACKNOWLEDGES AND AGREES THAT THE MATERIALS, SPECIFICATIONS, DETAILS, DIMENSIONS, LAYOUT AND FLOORPLANS SET OUT HEREIN OR OTHERWISE VIEWED BY THE PURCHASER ARE APPROXIMATE AND SUBJECT TO CHANGE WITHOUT NOTICE.

ARCHITECT
SERIES

4309

ONE BEDROOM FLEX

VANCOUVER
HOUSE