

#1-2668 Ash Street,  
Vancouver, B.C.

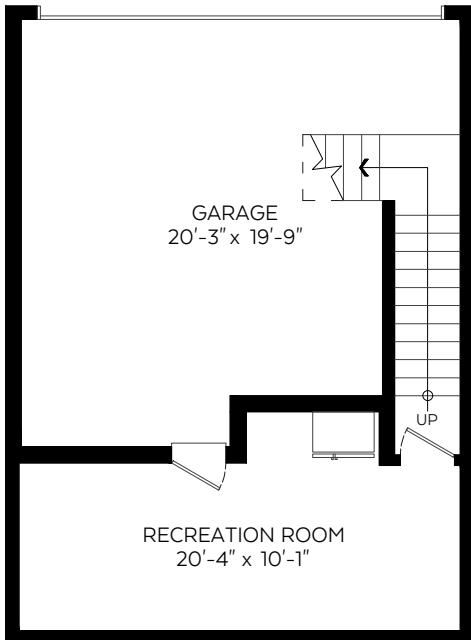
Main Floor: 877 sq.ft.  
Upper Floor: 816 sq.ft.  
Lower Floor: 290 sq.ft.

**Total: 1,983 sq.ft.**

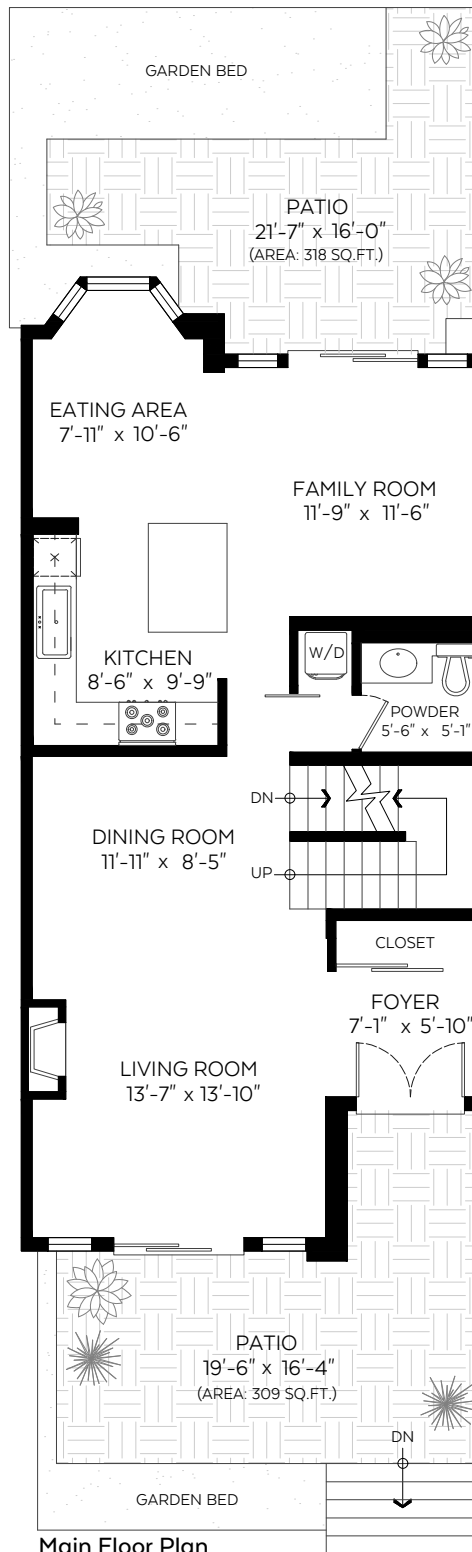
**Auxiliary Area**

Garage: 347 sq.ft.  
Patis: 627 sq.ft.  
Balconies: 76 sq.ft.

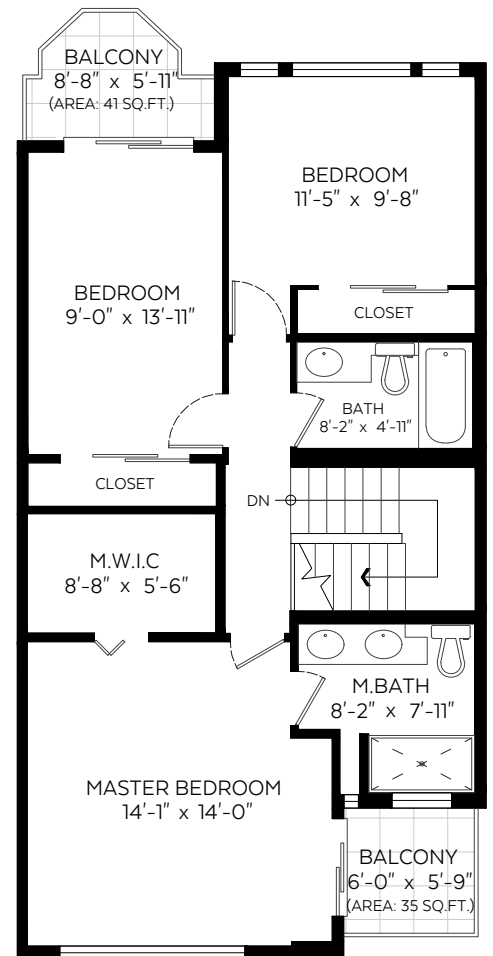
SCALE  
0' 5'



**Lower Floor Plan**  
Floor Area: 290 sq.ft.



**Main Floor Plan**  
Floor Area: 877 sq.ft.



**Upper Floor Plan**  
Floor Area: 816 sq.ft.

Measured on: Oct. 9, 2018



**NORTH**



The floor plan is not suitable for architectural/construction and is covered under E&O. © Excelsior Measuring Inc. 2018. All rights reserved for Excelsior Measuring Inc. Users shall not publish and distribute such material (in whole or in part) and/or incorporate it in other works in any form.

**Pixilink**  
SOLUTIONS  
604-639-5434  
WWW.PIXILINK.COM