

# VANCOUVER HOUSE

# ARCHITECT SERIES

# 1802



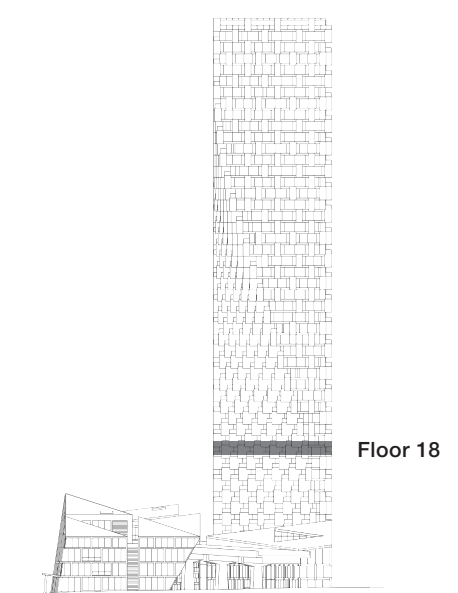
**TWO BEDROOM**

**TOTAL LIVING 972 SQ FT**

Indoor Living 660 sq ft

Outdoor Living 312 sq ft

This light-filled home is defined by an expansive wrap-around balcony with southeastern exposure and views of Granville Island and False Creek. The living area has direct access to this spectacular balcony, and another east-facing terrace is enjoyed exclusively by the master bedroom, elevating its elegant sense of retreat.



westbank

**BIG**

THERE ARE NO REPRESENTATIONS OR WARRANTIES HEREIN, MADE BY THE DEVELOPER, ITS AGENTS OR EMPLOYEES, OR ANY OTHER PERSON ON BEHALF OF THE DEVELOPER, OTHER THAN THOSE CONTAINED IN A CONTRACT OF PURCHASE AND SALE BETWEEN A PURCHASER AND THE DEVELOPER AND IN THE DISCLOSURE STATEMENT FOR THE DEVELOPMENT TO THE EXTENT MANDATED BY LAW. IN PARTICULAR, THE PURCHASER ACKNOWLEDGES AND AGREES THAT THE MATERIALS, SPECIFICATIONS, DETAILS, DIMENSIONS, LAYOUT AND FLOORPLANS SET OUT HEREIN OR OTHERWISE VIEWED BY THE PURCHASER ARE APPROXIMATE AND SUBJECT TO CHANGE WITHOUT NOTICE.

20140716

ARCHITECT  
SERIES

1802

TWO BEDROOM

VANCOUVER  
HOUSE