

VANCOUVER HOUSE

ESTATE 4705



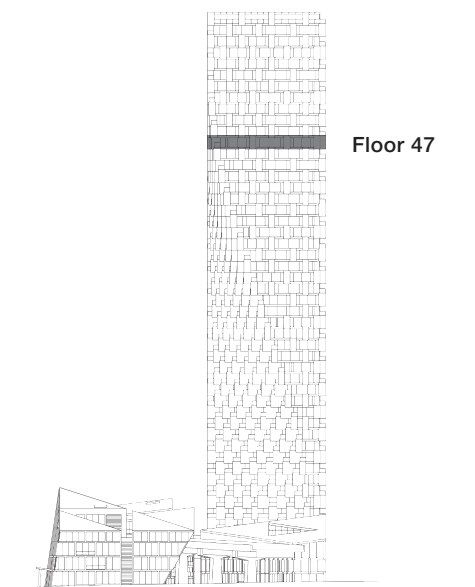
TWO BEDROOM

TOTAL LIVING 1599 SQ FT

Indoor Living 1359 sq ft

Outdoor Living 240 sq ft

- Unobstructed views that span False Creek and Mount Baker with direct access to outdoor space from all principle rooms
- Boffi chef's kitchen featuring Miele appliances and custom BIG-designed Corian island
- Master bedroom with marble clad 5-piece ensuite and spacious dressing room



westbank

BIG

4705

TWO BEDROOM

With over 40 linear feet of floor-to-ceiling glazing and direct access to 240 square feet of terraces, this Estate epitomizes indoor-outdoor living. Vistas span False Creek to Mount Baker. The spacious master bedroom features a marble clad five-piece ensuite with custom dual sinks and a freestanding bathtub and walk-in shower. An L-shaped Boffi chef's kitchen equipped with Miele appliances and a custom BIG-designed Corian island overlooks the grand salon and provides the ideal ambiance for entertaining.

VANCOUVER
HOUSE