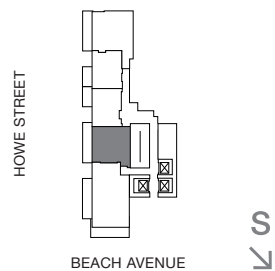


VANCOUVER HOUSE

ARCHITECT SERIES

602



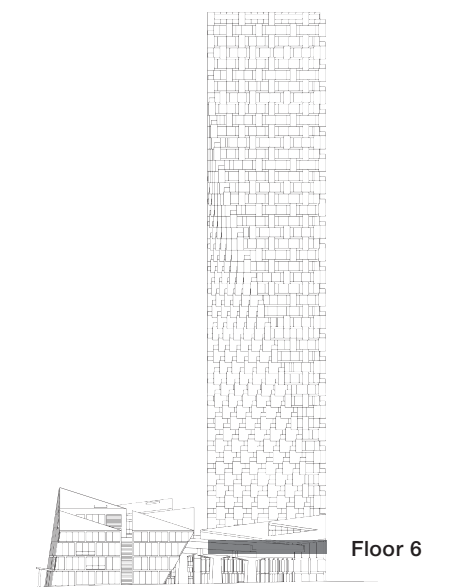
ONE BEDROOM

TOTAL LIVING 656 SQ FT

Indoor Living 530 sq ft

Outdoor Living 126 sq ft

The perfect pied-à-terre. Floor-to-ceiling glazing and an open-concept living, dining, and kitchen area opens onto the west-facing terrace, drawing the eye to the views of May and Lorne Brown Park. This home combines the best of indoor and outdoor living through harmonious design.



westbank

BIG