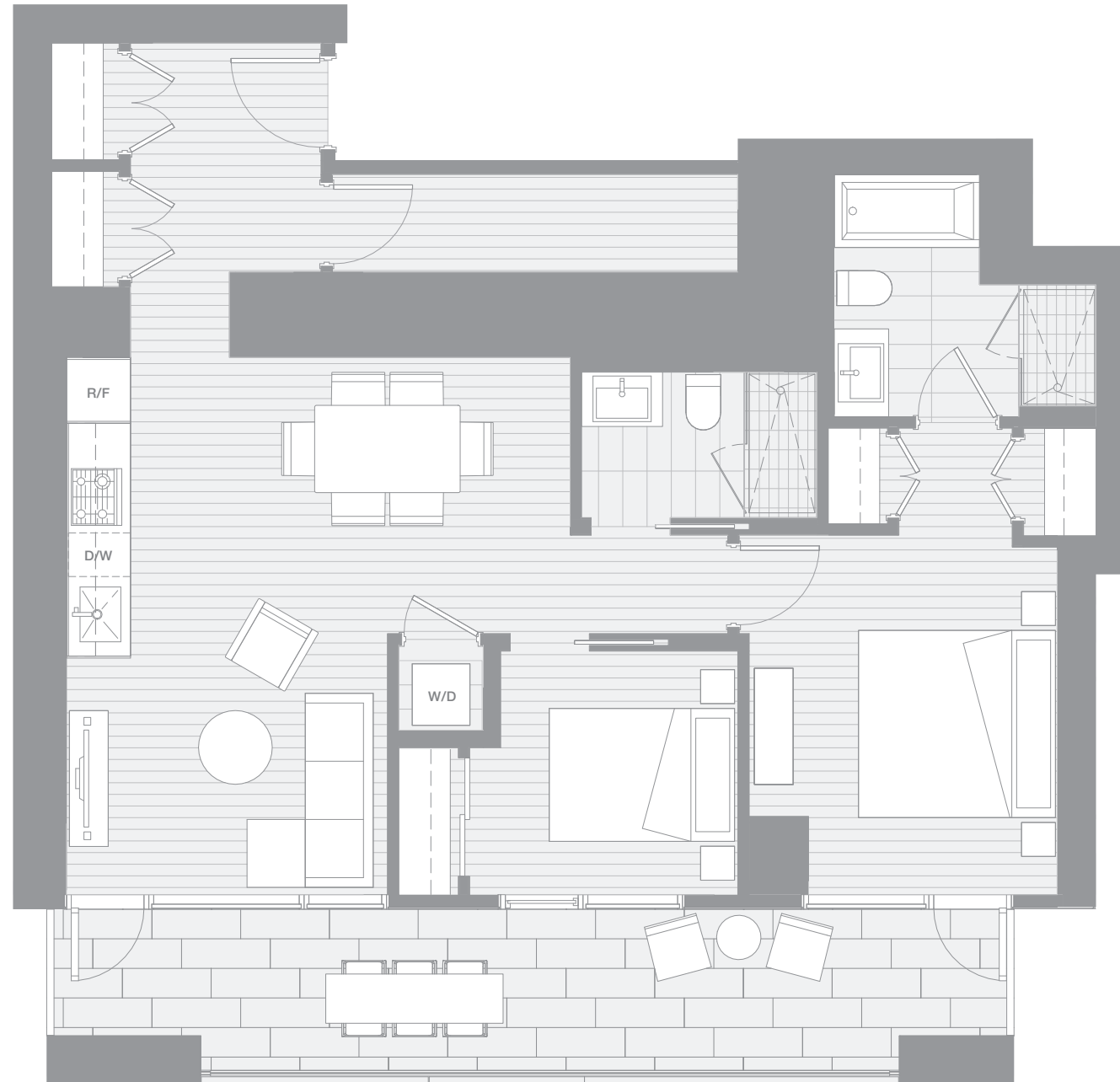


VANCOUVER HOUSE

ARCHITECT SERIES

3702



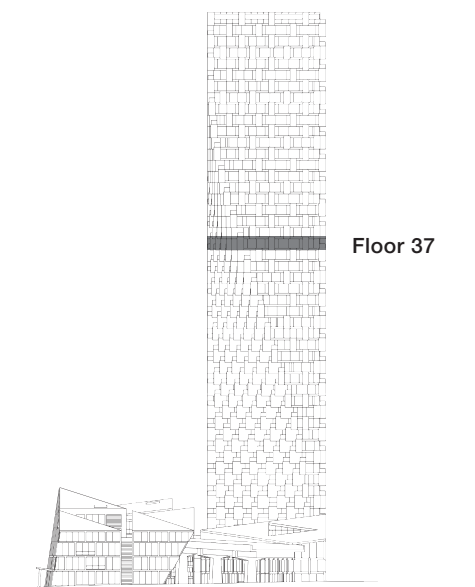
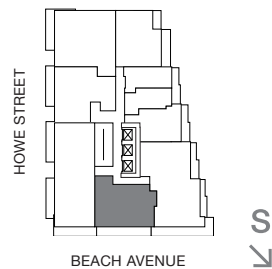
TWO BEDROOM

TOTAL LIVING 1149 SQ FT

Indoor Living 956 sq ft

Outdoor Living 193 sq ft

This sunny abode offers a full southern exposure and views of Granville Island with floor-to-ceiling glazing and a large terrace along its entire exterior. The efficient design allows for captivating views from the two bedrooms and the open-concept living and dining area. Ample storage is provided with a generous in-suite storage space. Hardwood floors throughout streamline and unify this brilliant space.



westbank

BIG

ARCHITECT
SERIES

3702

TWO BEDROOM

VANCOUVER
HOUSE