

# VANCOUVER HOUSE

# ARCHITECT SERIES

# 1006



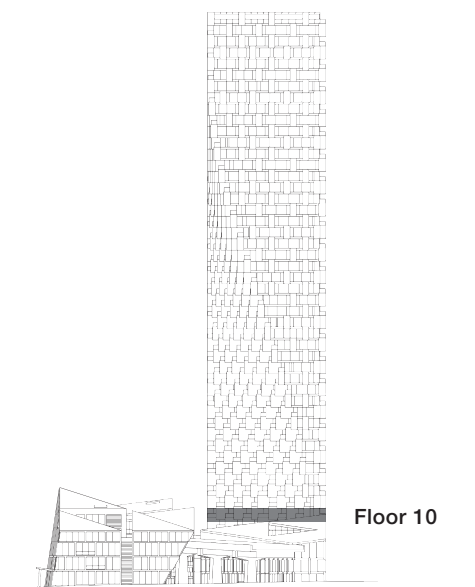
**TWO BEDROOM**

**TOTAL LIVING 907 SQ FT**

Indoor Living 782 sq ft

Outdoor Living 125 sq ft

This spacious home boasts expansive western exposure and a generous terrace off the living area. The gallery foyer opens to the open-concept living, dining and kitchen. The large master bedroom, with an ensuite complete with soaker tub and walk-in shower, is the perfect urban retreat.



westbank

**BIG**

THERE ARE NO REPRESENTATIONS OR WARRANTIES HEREIN, MADE BY THE DEVELOPER, ITS AGENTS OR EMPLOYEES, OR ANY OTHER PERSON ON BEHALF OF THE DEVELOPER, OTHER THAN THOSE CONTAINED IN A CONTRACT OF PURCHASE AND SALE BETWEEN A PURCHASER AND THE DEVELOPER AND IN THE DISCLOSURE STATEMENT FOR THE DEVELOPMENT TO THE EXTENT MANDATED BY LAW. IN PARTICULAR, THE PURCHASER ACKNOWLEDGES AND AGREES THAT THE MATERIALS, SPECIFICATIONS, DETAILS, DIMENSIONS, LAYOUT AND FLOORPLANS SET OUT HEREIN OR OTHERWISE VIEWED BY THE PURCHASER ARE APPROXIMATE AND SUBJECT TO CHANGE WITHOUT NOTICE.

20140716