

# VANCOUVER HOUSE

# ESTATE 4801



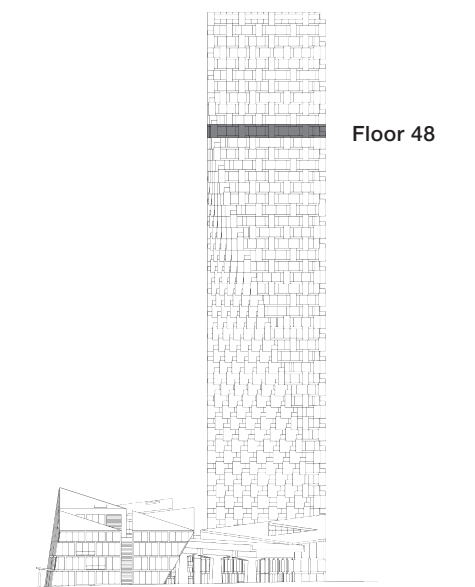
**THREE BEDROOM & FAMILY ROOM**

**TOTAL LIVING 3566 SQ FT**

Indoor Living 2728 sq ft

Outdoor Living 838 sq ft

- Spanning entire south façade with unobstructed views from False Creek to English Bay
- Boffi chef's kitchen featuring Miele appliances and custom BIG-designed Corian island
- Master bedroom with marble clad 5-piece ensuite and dressing room
- Guest bedrooms with ensuites and a private flex space ideal for a live-in housekeeper



westbank

**BIG**

4801

## THREE BEDROOM &amp; FAMILY ROOM

This well-appointed Estate has the ambiance of an opulent home with an ensemble of three bedrooms and a family room all with direct access to outdoor living space, plus five bathrooms including a five-piece master ensuite with freestanding bathtub. Running across the entire façade is 140 linear feet of floor-to-ceiling glazing opening onto over 800 square feet of outdoor living space. Stunning views are seen from three vistas; scenery of Granville Island, further to the west all of Point Grey and English Bay out to the Pacific Ocean, and eastwards to False Creek and Mount Baker. The interior features a grand salon with room for piano and sliding doors onto the terraces to maximize the indoor-outdoor aesthetic. A Boffi kitchen featuring Miele appliances wraps around a custom BIG-designed Corian island, are an aspiring home chef's dream. While a dedicated family room, a separate flex space ideal for a live-in housekeeper, and an entrance gallery with ample wall space for art complete the mise en scene.

VANCOUVER  
HOUSE